



our philosophy is based on a strong commitment to providing excellence in creative hairdressing & client care, within a professional & friendly environment.

education is key to our success and instrumental in the growth of our company. staff regularly attend our in-house academy at camden lock to ensure quality, consistency and progression, which gives us both national and international recognition.

we welcome you into our group and hope you enjoyed your visit to our salon.

british hairdressing awards

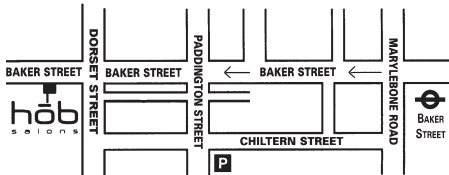
- british hairdresser of the year 2006/7 nominee
- london hairdresser of the year 2005/6
- eastern region hairdresser of the year 2003/4 & 2001/2

fellowship for british hairdressing awards

- fellowship hairdresser of the year 2006/7
- gold star salon image of the year 2006/7
- gold star salon group of the year 2006/7, 2005/6, 2003/4

www.hobsalons.com

date	time	stylist



all our salons are open 7 days a week.
please note that 24 hours notice is required for any cancellation or a charge may be incurred.



ladies

	stylist	senior stylist	art team/ asst.mgr	manager
cut and finish	£55.00	£60.00	£65.00	£70.00
cut only	£45.00	£50.00	£55.00	£60.00
blow dry				
short hair	£30.00	£32.50	£35.00	£37.50
long hair	£35.00	£37.50	£40.00	£42.50

men

cut and finish	£40.00	£45.00	£47.50	£50.00
----------------	--------	--------	--------	--------

highlights

	colour technician	senior colour technician
full head	from £115.00	£130.00
half head	from £90.00	£95.00
hairline/crown & parting	from £60.00	£70.00

tinting

regrowth tint	from £55.00	from £60.00
full head virgin hair	from £70.00	from £75.00
bleaching	from £70.00	from £75.00
cosmetic colour	from £45.00	from £50.00

permanent waves from £75.00

Yuko Straightening System from £350.00

Wella Strate straightener from £50.00

hair up/bride On Quotation

children age 3-12 yrs, 50% discount on all above
 prices mon-fri age 13+ full price

manicures from £22.00

pedicures from £38.00

The above prices are a guide and may vary according to hair type, and apply to our W1 branch only. Consultation free of charge.